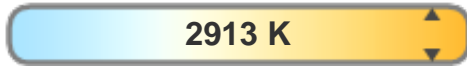


infinity

Light quality:



Color temperature:



Output: 3797 lm
Peak: 10586 cd
Power: 138,1 W
PF: 0,90

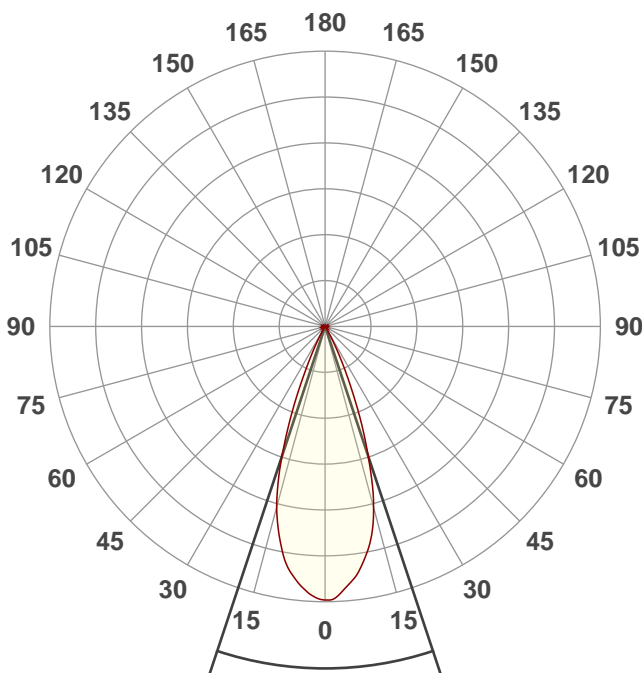


Product name:
TF-260 C7 55-gr HC

Date and time:
27-8-2019 13:40:04

Item number:
200203

Additional information:
**Tungsten mode
High CRI
Zoom 55°**



Beam angle

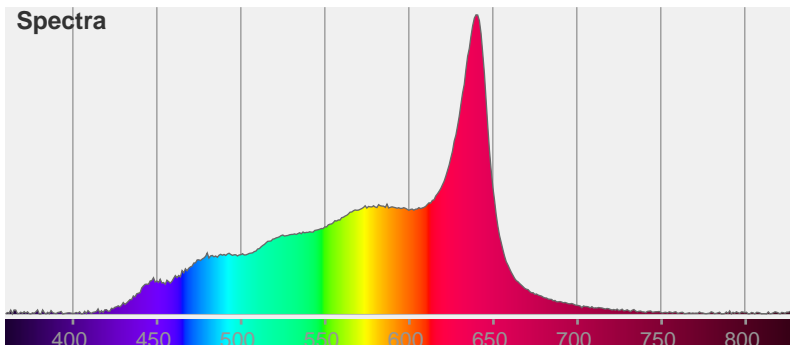
36,8°

Color



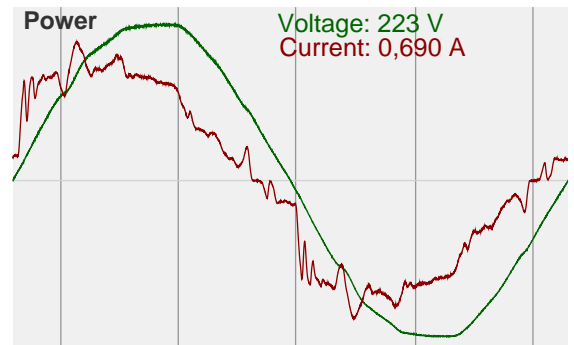
CIE1931
x: 0,447
y: 0,413

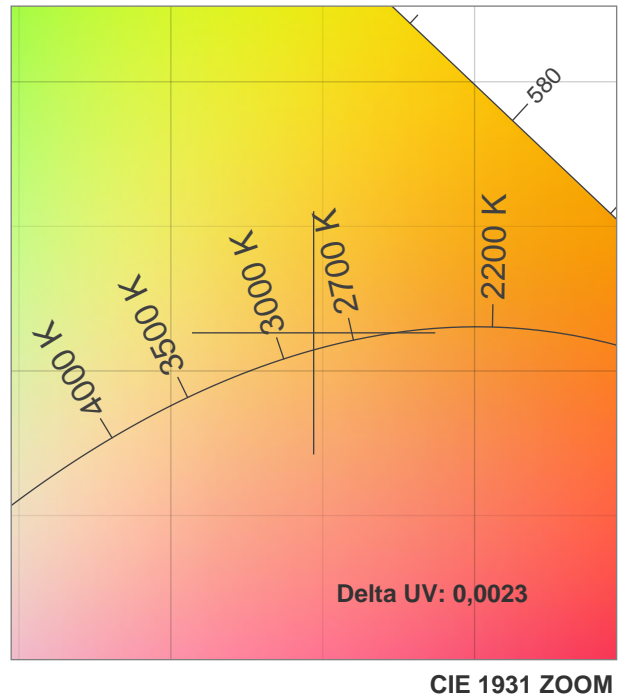
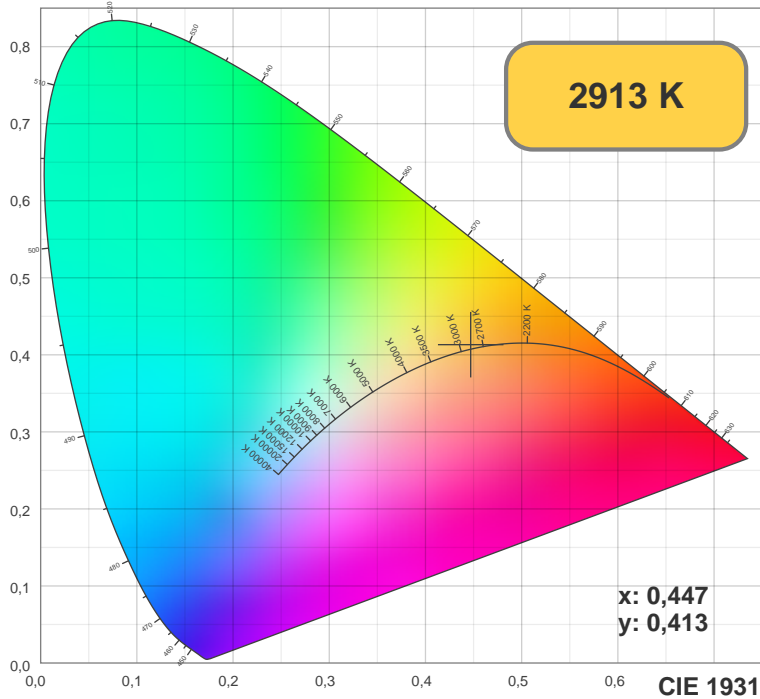
Spectra



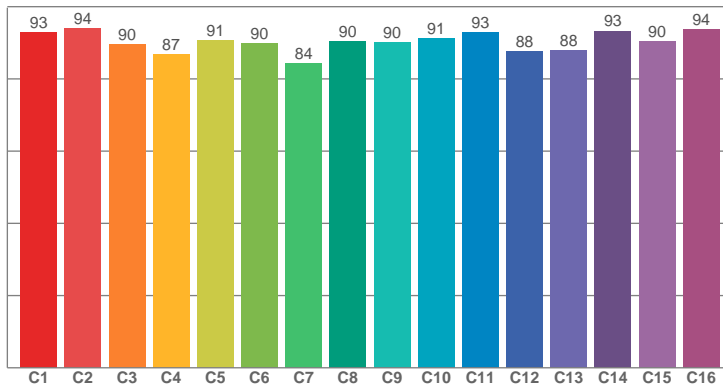
Power

Voltage: 223 V
Current: 0,690 A

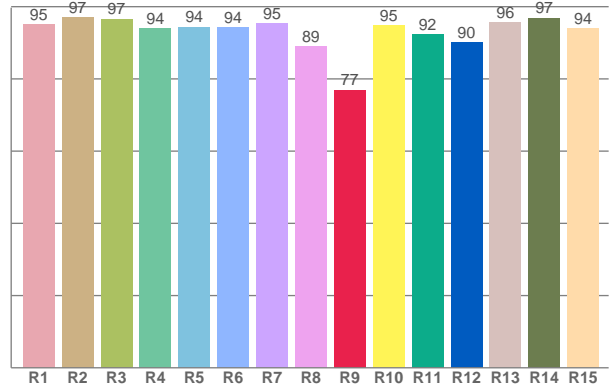




TM30: 90,6



CRI: 94,4 (R1-R8)



CRI R values, only R1-R8 are used to calculate final CRI value

R1	R2	R3	R4	R5	R6	R7	R8	R9	R10	R11	R12	R13	R14	R15
95,03	96,98	96,57	93,91	94,40	94,34	95,31	88,91	76,97	94,84	92,28	90,00	95,70	96,91	93,95

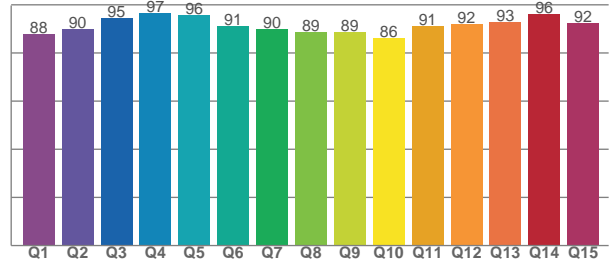
TM30 C values, 16 binned values out of total of 99 C values

C1	C2	C3	C4	C5	C6	C7	C8	C9	C10	C11	C12	C13	C14	C15	C16
92,90	93,89	89,62	86,88	90,60	89,75	84,22	90,32	90,00	91,17	92,78	87,66	87,96	93,29	90,38	93,64

CQS Q values

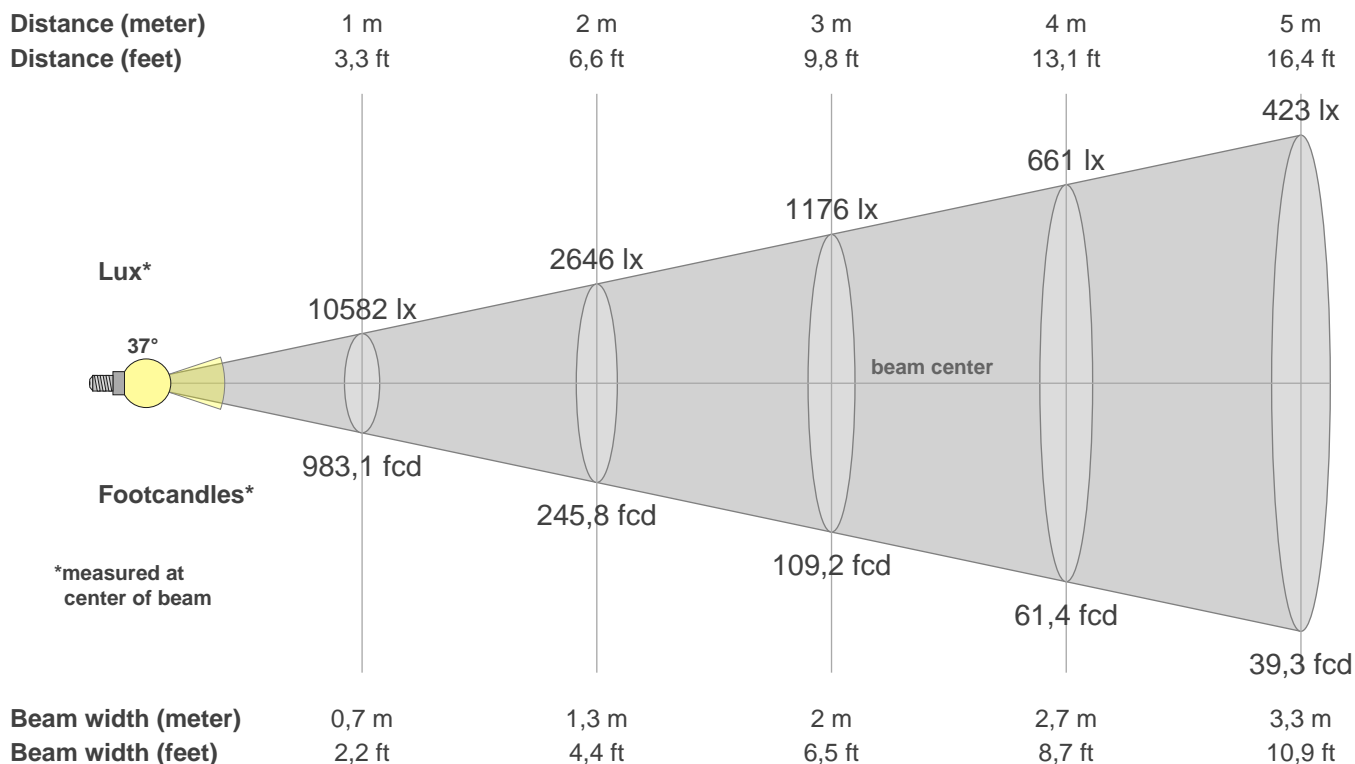
Q1	Q2	Q3	Q4	Q5	Q6	Q7	Q8	Q9	Q10	Q11	Q12	Q13	Q14	Q15
87,98	90,05	94,61	96,55	95,87	91,20	90,03	88,68	88,68	86,31	91,12	91,87	92,92	96,13	92,23

CQS: 91,0



Color parameters

CCT	CRI	CRI R9	TM30 Rf	TM30 Rg	CQS	x	y	u	v	Duv
2913 K	94,4	77,0	90,6	97,1	91,0	0,4	0,4	0,3	0,4	0,0023



Intensities in 0° c-plane

0°	2°	4°	6°	8°	10°	12°	14°	16°	18°	20°	22°	24°	26°	28°	30°	32°	34°	36°	38°
10,6K	10,5K	10,2K	9,9K	9,5K	9,0K	8,5K	7,7K	6,8K	5,5K	4,3K	3,1K	2,1K	1,3K	0,7K	0,3K	0,1K	0,1K	0,0K	0,0K
100%	99%	97%	94%	90%	85%	80%	73%	64%	52%	41%	30%	20%	12%	6%	3%	1%	1%	0%	0%

Intensities in 0° c-plane

0°	2°	4°	6°	8°	10°	12°	14°	16°	18°	20°	22°	24°	26°	28°	30°	32°	34°	36°	38°
10,6K	10,5K	10,2K	9,9K	9,5K	9,0K	8,5K	7,7K	6,8K	5,5K	4,3K	3,1K	2,1K	1,3K	0,7K	0,3K	0,1K	0,1K	0,0K	0,0K
100%	99%	97%	94%	90%	85%	80%	73%	64%	52%	41%	30%	20%	12%	6%	3%	1%	1%	0%	0%

Intensities in 180° c-plane

0°	2°	4°	6°	8°	10°	12°	14°	16°	18°	20°	22°	24°	26°	28°	30°	32°	34°	36°	38°
10,6K	10,5K	10,3K	10,0K	9,6K	9,1K	8,4K	7,7K	6,7K	5,5K	4,2K	3,0K	1,9K	1,1K	0,6K	0,3K	0,1K	0,0K	0,0K	0,0K
100%	99%	97%	94%	91%	86%	80%	72%	64%	52%	40%	28%	18%	10%	5%	2%	1%	0%	0%	0%

Intensities in 180° c-plane

0°	2°	4°	6°	8°	10°	12°	14°	16°	18°	20°	22°	24°	26°	28°	30°	32°	34°	36°	38°
10,6K	10,5K	10,3K	10,0K	9,6K	9,1K	8,4K	7,7K	6,7K	5,5K	4,2K	3,0K	1,9K	1,1K	0,6K	0,3K	0,1K	0,0K	0,0K	0,0K
100%	99%	97%	94%	91%	86%	80%	72%	64%	52%	40%	28%	18%	10%	5%	2%	1%	0%	0%	0%

Beam angle 50%	Field angle 10%	Cutoff angle 2,5%	Intensity ratio in 120° cone	Intensity ratio in 90° cone
36,8°	52,8°	60,3°	97,8%	97,0%